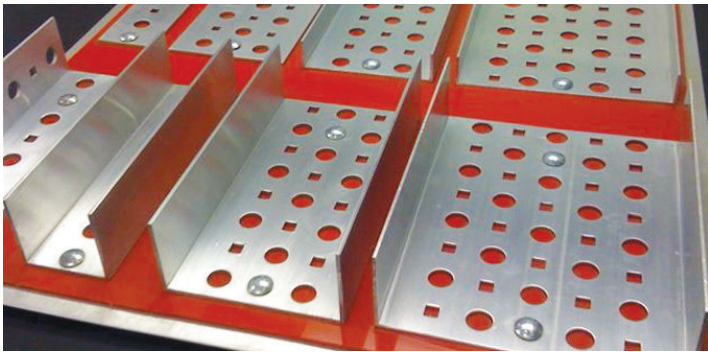


Ohio Valley Industrial Services has always trusted Channel Track & Tube-Way Industries for our instrumentation tubing, wiring, cable, and instrument support needs.

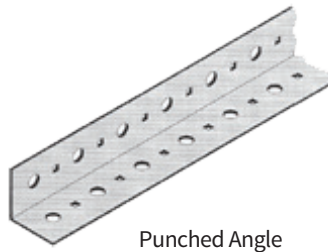
Channel Track & Tube-Way Industries manufactures a system of instrument tubing supports and instrument supports for the industrial and commercial market. These products include instrument stands, punched angles, punched channels, punched flat bar, clamps, and connection parts.



One of the many products we distribute from Channel Track & Tube-Way is Raceway and Cable Trays.

Tray Materials

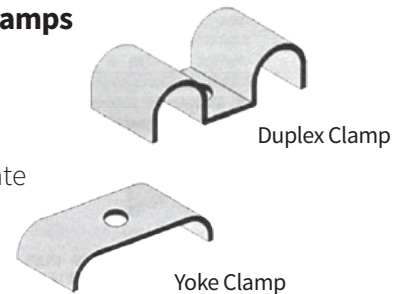
- Stainless
- Aluminum
- Fiberglass
- Galvanized



Punched Angle

Instrument Tubing Clamps

- Single-Line Clamp
- Duplex Clamp
- Gang Strap & Back Plate
- Yoke Clamp

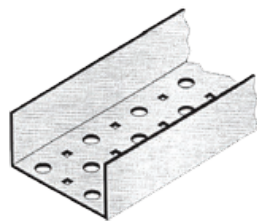


Duplex Clamp

Yoke Clamp

Tray Designs

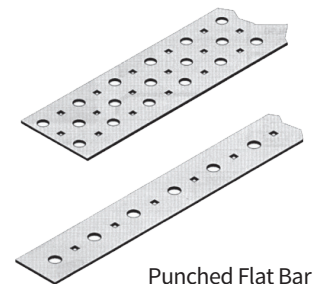
- Perforated Angle
- Channel
- Flat Bar for support of Cable and Instrument Tubing



Punched Channel 2" Flange

Hole Dimensions

- Round hole for 1/2" bolts
- Square hole for 1/4" carriage bolt or machine screw.



Punched Flat Bar

Ohio Valley Industrial Services has always trusted Behringer for our industrial clamps, tube hangers, and supports.

For all your industrial and sanitary applications, Behringer has the clamps! Industrial clamps include standard, heavy, twin, and saddle series for pipe and tubing from 1/4" to 8" sizes. Sanitary/Hygienic supports incorporate a 'smooth bore' contact surface, 304SS hardware, and are virtually maintenance free.

Industrial Pipe Clamps

- Vibration-Dampening Pipe Clamps
- Standard Series Pipe Clamps
- Heavy Series Pipe Clamps
- Heavy 4 Series Pipe Clamps
- Twin Series Pipe Clamps
- Saddle Series Pipe Clamps
- Cushioned Pipe Clamps
- Custom Pipe Clamps



Standard Series Pipe Clamps



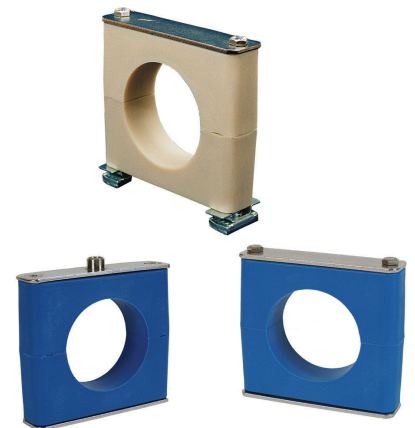
Heavy Series Pipe Clamps

Hygienic Tube Hangers and Supports

- CH Series Compact Hygienic
- RH Series Rounded Hygienic
- Smooth Bore Series Sanitary Pipe Clamps
- Hygienic Clamps



CH Dynamic Mount Hanger



Smooth Bore Series Sanitary Pipe Clamps